



FLAME BOSS®

FLAME BOSS 400 UNIVERSAL
USER MANUAL

VERSION 4

User manuals available at
FlameBoss.com/manuals

WARNING: IMPORTANT SAFETY INSTRUCTIONS

It is important for the safety of persons to follow these instructions. Save these instructions. Follow all instructions, as incorrect installation and use can lead to injury or property damage.

Flame Boss 400 is intended for use only in dry, outdoor locations. Store the unit indoors in a dry location. If you know or suspect that the Flame Boss controller or power adapter has been submerged in water, do not use the unit.

The 12 V DC power to the unit shall be supplied by a properly certified power adapter with SELV / LPS output.

Use only the power adapter provided with the unit.

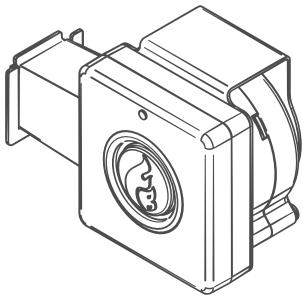
Do not allow children to play with a Flame Boss 400. Keep away from children.

Flame Boss 400 is not to be used by persons with reduced physical, sensory, or mental capabilities, or lack of experience and knowledge.

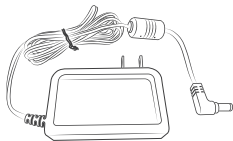
Do not place or mount a Flame Boss 400 where it is exposed to excessive heat from the grill or smoker.

WHAT'S INCLUDED

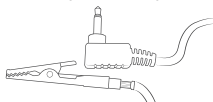
- 1** Flame Boss smoker controller with integrated blower



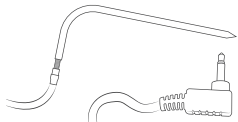
- 2** 12 V DC power supply



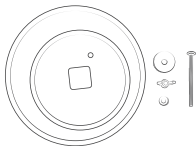
- 3** Pit temperature probe



- 4** Meat temperature probe



- 5** Manifold with fasteners



- 6** Threaded adapter



INSTALL FLAME BOSS MOBILE APP

Open the camera app on your tablet or smartphone and point it here:



OR if you are unable to scan the code above, open the browser (Chrome or Safari, for example) on your tablet or smartphone and enter the following address: **<https://myflameboss.com/app>**

Follow the instructions in the Flame Boss app to add a controller.

WIFI INDICATORS

The WiFi status is shown with the following LED indicators:

SLOW BLINKING: Controller is in Access Point mode and NOT connected to the Flame Boss server.

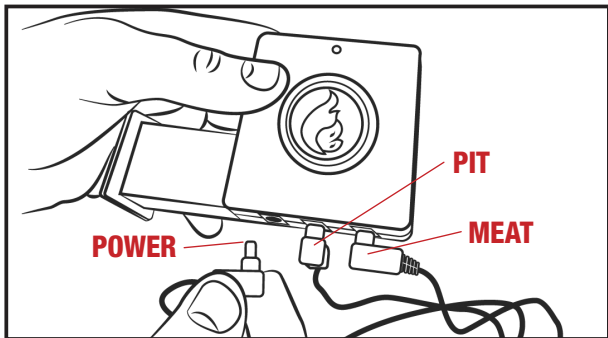
FAST BLINKING: Controller is in Station mode and NOT connected to the Flame Boss server.

SOLID: Controller is connected to the Flame Boss server via cloud connect or to controller via local or direct connect.

Press button for 5 or more seconds to reset controller:

RAPID BLINKING (3 seconds followed by slow blink):
Controller is resetting and will start in Access Point mode.

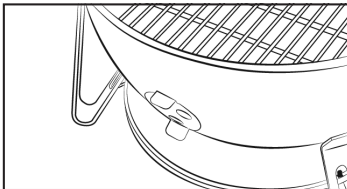
PLUG INSTALLATION



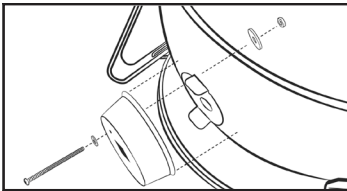
UNIVERSAL MANIFOLD INSTALLATION

(shown on a Weber Smokey Mountain)

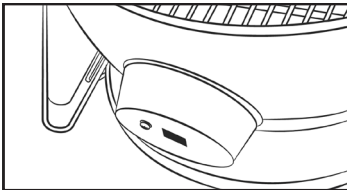
1



2



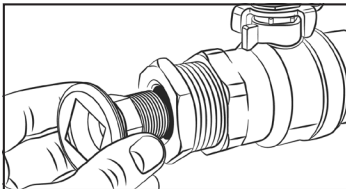
3



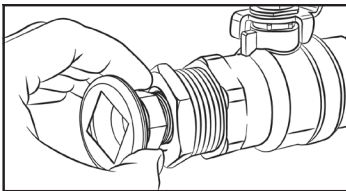
UNIVERSAL THREAD ADAPTER INSTALLATION

(using 3/4" Bushing - not included)

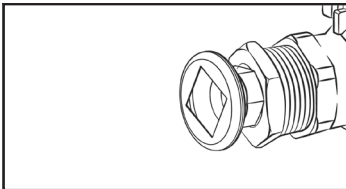
1



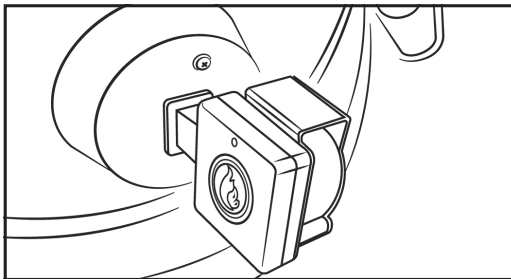
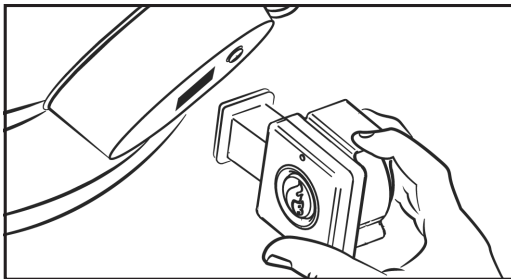
2



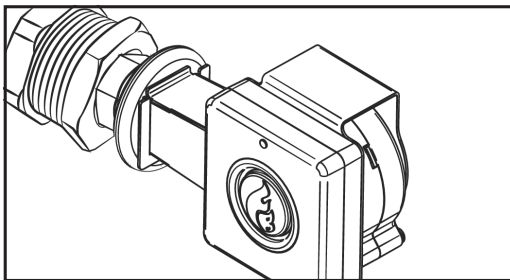
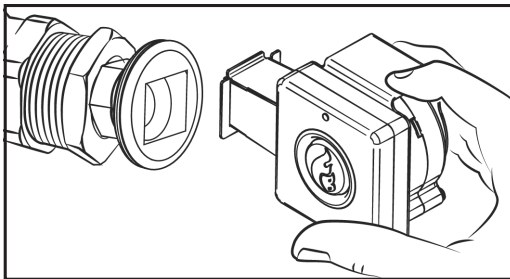
3



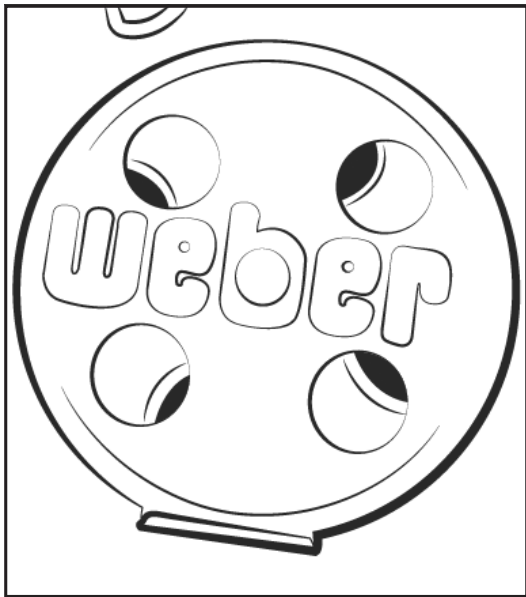
CONTROLLER INSTALLATION USING MANIFOLD



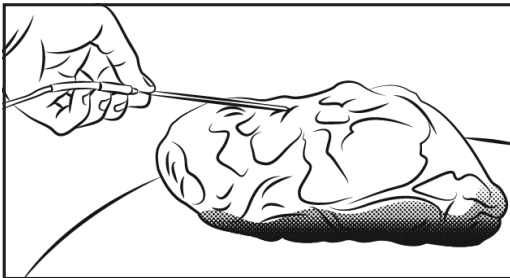
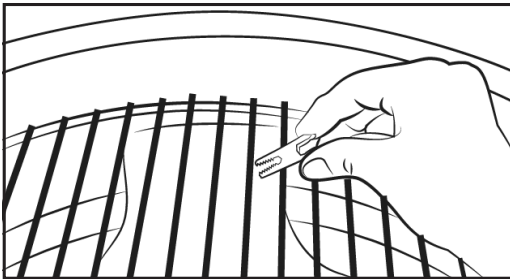
CONTROLLER INSTALLATION USING THREADED ADAPTER



TOP VENT ALMOST CLOSED



PROBE PLACEMENT



NOW GET COOKIN!

TECHNICAL SUPPORT

800-978-9078 | support@flameboss.com

HOURS

MONDAY – FRIDAY 9AM – 6PM EST

FlameBoss.com

MyFlameBoss.com

Facebook.com/flameboss

Patent no: US 9,582,754 B1